

Wild Bird Cover Options

Paul Flanagan
General Manager
DLF Seeds
Waterford

Content

- DLF Overview
- GLAS scheme overview
- Game cover for Pheasant
- GLAS Wild Bird Cover
- Mixture Options
- Logistics

DLF Overview

- DLF Is the largest breeder and producer of grass seed in the world
- DLF Ireland started in March 2015 (4 years old in 2019)
- Warehouse in Belview Port
- Research and Trials south of Waterford City
- Dedicated breeding programs for Ireland
- Supplier of all forage, game and amenity seed



GLAS Scheme

- **Green** – *preserves and enhances the natural environment*
- **Low-carbon** – *retains carbon stocks in soil through margins and habitat preservation*
- **Agri-environment** – *promotes agricultural production methods compatible with the protection of the environment, water quality, biodiversity and climate change mitigation*

Species and habitats



Water quality



Climate Change



Wild Bird Cover

What is it? What are the Rules!

- Wild Bird Cover is a spring-sown crop that is left unharvested over winter.
- 1 year or 2 year mix
- Sow a suitable seed mix by 31st May
- Min area is 1 ha as a Priority Action.
- Min area is 0.25 ha as a General Action.
- Max area for payment is 3 ha.
- Payment rate = €900/ha/yr



Game cover what species should we use?

Game cropping is an art & can be as complex as you like.

- Do you want feed or cover?
- Location? Surrounding land? Feed available locally?
- Soil type? Grass weeds or cereal weeds?
- Plant in rows or broadcast?
- When do you want the feed available? How long for?

Cover crops

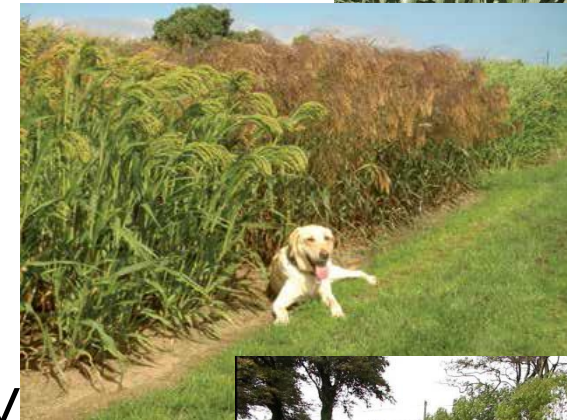
Maize - Too many crows badgers and not enough maize.

Sorghum – Maize like with no cob; slow to establish and needs sunshine

Millet – Like sorghum needs heat, will combine well with maize or sorghum

Kale – Will provide cover for the whole shooting season, pheasant like big canopy and bare ground

Sunflowers – Not simple establish, also provide a lot of oil rich seeds.



Wild Bird Cover (Cereals)

What Cereal to choose? *All of below meet GLAS Specifications*

- **Oats (Most Popular)** will thrive in the greatest range of soil pH's. Shed before Barley. **Seed very scarce**
- **Barley** will hold onto grain longer than oats but is more sensitive to varying soil pH. **Seed OK**
- **Wheat** will shed grain early and the grain will have a higher propensity to sprout. **Seed Scarce**
- **Triticale (cross between Wheat and Rye)** will hold its grain better in the winter months. **Seed Scarce**

Wheat



X

Rye



=

Triticale



Wild Bird Cover (Non Cereals)

Linseed (GLAS approved) Seed Plentiful

Traditionally grown for its oil and in more recent years as a bird cover/feed and is particularly attractive to the partridge. Linseed is by far the most popular choice to date as it is easy to establish and produce a nice flowering crop.

Oilseed rape (GLAS approved) No seed

Oilseed rape is much more expensive per kg than Mustard or linseed and will produce a yellow flowering canopy.

Mustard (GLAS approved) Seed Plentiful

Mustards are available as white and yellow flowering plants, which will establish easily and probably the most economical option. Although mustard tends to get killed off by frost it will provide cover with stiff woody stems over winter months.

Kale (GLAS approved) Seed Plentiful

Kale (If following a two year mix) Ensure to choose a variety with large leaves for cover, a variety such as Coleor Kale has a purple pigment to the leaves which adds to aesthetics of the plot.



Wild Bird Cover (Non Cereals)

Quinoa – produces a large amount of seed and is particularly attractive to pheasant and partridge, it is commonly grown with kale. Quinoa will provide cover until the onset of frost when it will begin to break down and the Kale provides more long term cover.

Borage – Traditionally an annual herb which was grown for culinary and medicinal use but more recently cultivated for its oil content. Borage will reach 2 – 3 feet and will attract bees all summer long. Borage is a self-seeding plant and will regenerate in the same area for years to come.

Phacelia – Has become quite popular in Ireland in recent years particularly as an arable greening crop sown after harvest and left in place until early December. We currently have 23,000ha of greening crops sown annually in Ireland. Phacelia produces a mass of sweet smelling purple flowers which will attract a lot of nectar foragers and insects. It is not frost hardy so best part of a mixture and will self-seed as borage will.

Buckwheat – A fast growing short term crop which is very attractive to pheasants, partridge and deer as both a cover and a feed. It is also a nectar rich crop attracting nectar foragers. It is a very bulky crop and will provide cover after frost.

Fodder radish – Most commonly used where brassicas suffer from clubroot disease. A very fast establishing crop and as such is also common with the green cover arable market. Where fodder radish can really add value is after failed crops as it is so rapid to establish.

Gold of Pleasure – Very well suited to poorer and nutrient deficient soils. It is a very fast maturing plant producing s



Establishing Wild Bird Cover

Key points on establishment:

1. Cultivate ground well to create fine firm Seedbed
2. We want to cover the cereal in the ground but not bury the small seeds (Linseeds, Mustards etc).
3. Take care of crows particularly where cereal is exposed
4. Rolling will help seed to soil contact particularly small seeds



Mixtures

Wild Bird Cover Delight

75kg Triticale
7.5kg Linseed
5kg Mustard
0.5kg Phacellia

Wild Bird mix With Phacellia & Quinoa

15kg Triticale
3kg Linseed
0.25kg Phacellia
0.25kg Quinoa

Wild Bird Mix with Mustard & Gold of Pleasure

15kg Triticale
1.5kg Linseed
2.2kg Mustard
0.30Kg Gold of Pleasure

Wild Bird cover Standard mix

15kg Triticale (Also available with Oats)
3kg Linseed



- Full pallet deliveries = 50 Packs or 25ac (10ha).
- The Wild Bird standard mix is a stock item while stocks last
- Other 3 mixtures will be packed to order so allow 5 – 7 days for delivery.
- We will deliver anywhere in Ireland as long as you can unload a pallet.

Thank You